



Overview and Status 8th Committee Draft

Framework for A Mutual Acceptance Arrangement on OIML Type Evaluations

OIML TC3/SC5 Secretariat: U.S.A. and BIML

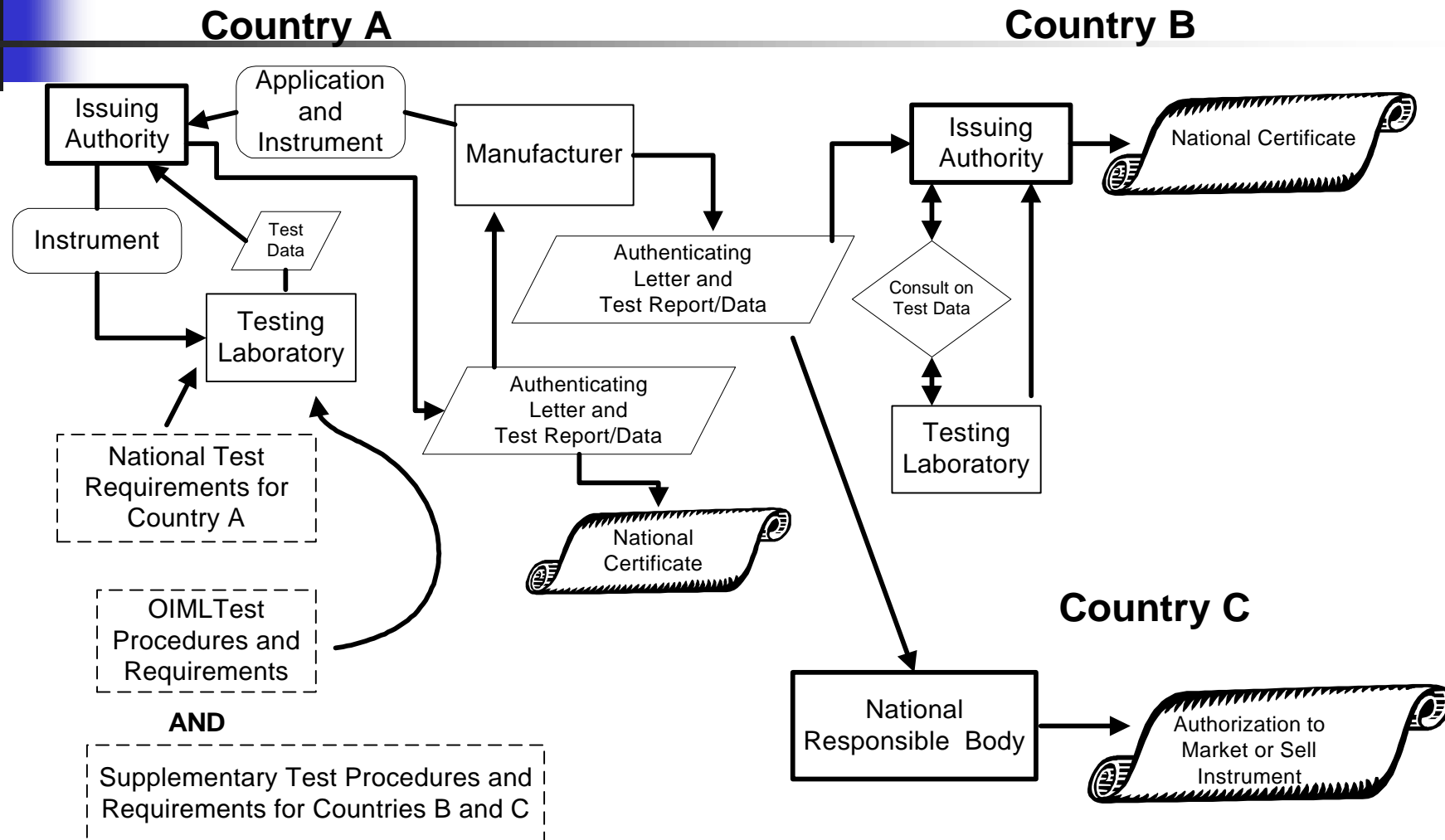
Participating: Australia, Austria, Belgium, Brazil, China, Cuba, Czech Republic, Denmark, Finland, France, Germany, Japan, Republic of Korea, Netherlands, Poland, Romania, Russia, Sweden, South Africa, Switzerland, United Kingdom, U.S.A.

Observing: Bulgaria, Canada, Hungary, Indonesia, Israel, Norway, Slovakia, Yugoslavia

Liaison: CECIP, IAF, IEC, ILAC, ISO

8th CD Framework for MAA on OIML Type Evaluations

Schematic of Overall Objective





INTERNATIONAL ORGANIZATION OF LEGAL METROLOGY

Eighth Committee Draft
Document

**FRAMEWORK FOR A MUTUAL ACCEPTANCE ARRANGEMENT
ON OIML TYPE EVALUATIONS**

OIML TC3/SC5 Secretariat: U.S.A. and BIML

Collaborating members:

Participating: Australia, Austria, Belgium, Brazil,
China, Cuba, Czech Republic, Denmark, Finland,
France, Germany, Japan, Republic of Korea, Netherlands,
Poland, Romania, Russia, Sweden, South Africa,
Switzerland, United Kingdom, U.S.A.

Observing: Bulgaria, Canada, Hungary, Indonesia, Israel,
Norway, Slovakia, Yugoslavia

Liaison: CECIP, IAF, IEC, ILAC, ISO

August 2001



INTERNATIONAL ORGANIZATION OF LEGAL METROLOGY

Second Committee Draft
Document

**CHECKLISTS FOR ISSUING AUTHORITIES
AND TESTING LABORATORIES
CARRYING OUT OIML TYPE EVALUATIONS**

OIML TC3/SC5 Secretariat: U.S.A. and BIML

Collaborating members:

Participating: Australia, Austria, Belgium, Brazil,
China, Cuba, Czech Republic, Denmark, Finland,
France, Germany, Japan, Republic of Korea, Netherlands,
Poland, Romania, Russia, Sweden, South Africa,
Switzerland, United Kingdom, U.S.A.

Observing: Bulgaria, Canada, Hungary, Indonesia, Israel,
Norway, Slovakia, Yugoslavia

Liaison: CECIP, IAF, IEC, ILAC, ISO

August 2001

OIML TC13/SC5 Conformity Assessment

VOTING FORM

Note: Indicate your vote and whether comments are provided by checking the appropriate space under the following items:

Item 1 8th Committee Draft OIML Document “**Framework for a mutual acceptance agreement on OIML type evaluations**”

VOTE

☐ For _____ ☐ Against _____ ☐ Abstain _____

COMMENTS ENCLOSED

☐ Yes _____ ☐ No _____

Item 2 2nd Committee Draft OIML Document “**Checklists for issuing authorities and testing laboratories carrying out OIML type evaluations**”

VOTE

☐ For _____ ☐ Against _____ ☐ Abstain _____

COMMENTS ENCLOSED

☐ Yes _____ ☐ No _____

CIML Member Signature _____

OIML Member Nation _____

Date _____

Please complete and return this Voting Form as soon as possible. The due date is:

November 15, 2001

Send comments and Voting form to Dr. C. Ehrlich by **Fax** at 1-301-975-5414, by **e-mail** at charles.ehrlich@nist.gov, or by postal mail at the address on the attached memorandum on this subject.



Declarations of Mutual Confidence (DoMC)

- Specifies OIML Recommendation involved
- Recommendation must be part of OIML Certificate System
- Identifies Participants
 - Issuing Authorities or National Responsible Bodies
- Identifies supplementary or different requirements



Declarations of Mutual Confidence (DoMC)

- Specifies Means used to establish mutual confidence (of testing laboratories.)
- Identifies Testing Laboratories
- Signature Page (not legally binding).



Process for Establishing a Declaration of Mutual Confidence

- Countries interested in establishing a DoMC for a particular type of instrument notify BIML.
- BIML notifies all CIML members of this intention, gathers information about interest from OIML member countries.
- BIML facilitates development of a “ad-hoc committee on participation review” that will coordinate the assessment of the pertinent testing laboratories and prepare a report evaluating their competences.



Process for Establishing a Declaration of Mutual Confidence

- BIML facilitates:
 - review of the report by participants in the DoMC;
 - any subsequent review/action required (e.g., appeals);
 - Signing and finalizing DoMC; also maintains information on the use of the DoMC.



Methods for Obtaining Confidence

- Issuing Authority:
 - Performs “internal audit”, as part of their Quality Management System; and completes “checklist” covering requirements in ISO/IEC Guide 65 and questionnaire in MAA on “National Capabilities for Type Testing” (Annex C)



Methods for Obtaining Confidence

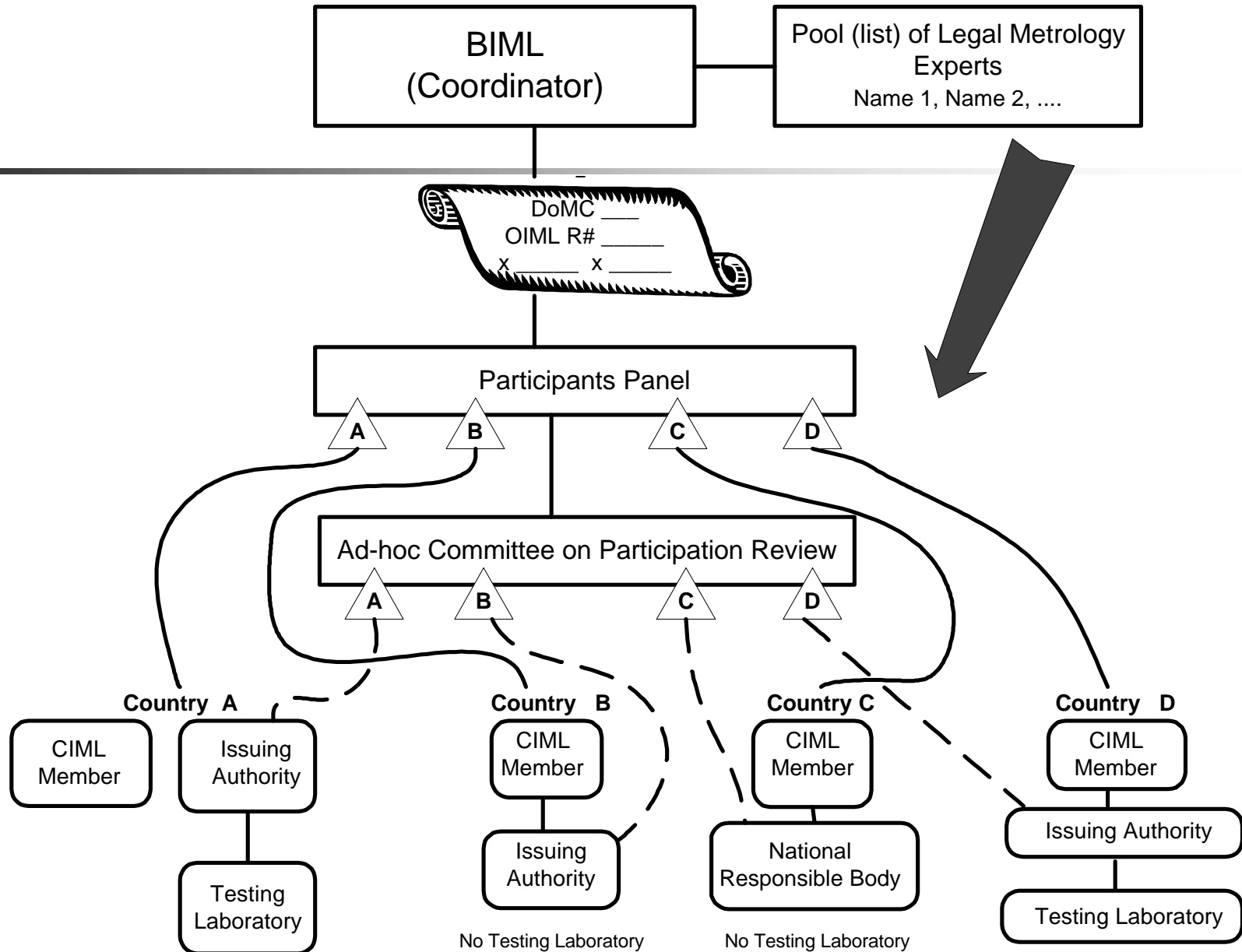
- Testing Laboratories assessed in one of three ways:
 - Accreditation audit (on-site visit required),
 - must include at least one expert in legal metrology for category of instrument covered
 - Peer Assessment audit (on-site visit required),
 - by qualified expert or experts, identified by, but not on, “ad-hoc committee on participation review”
 - Participation in documented intercomparison with other potential participants (no on-site visit required).



Methods for Obtaining Confidence

- “Ad-hoc committee on participation review” evaluates “Checklists,” audit reports or intercomparison data and prepares summary report.

Establishing a DoMC





A.4.

The participants indicted below hereby attest that they have achieved a voluntary mutual arrangement to accept and utilize test reports prepared, reviewed, and transmitted by other participants in their national type approval program for the category of instruments specified in A.1. This declaration of mutual confidence has been established in accordance with the requirements of the OIML Document on “Mutual Acceptance Arrangement on OIML Type Evaluations” dated _____.

State	Identity of Issuing Authority or National Responsible Body	OIML Member Signature	Date



Summary of Key Modifications to the 8th CD

- The term “self assessment” has been deleted, replaced by “peer assessment” (which requires on-site audit).
- Option for interlaboratory comparisons as a means of demonstrating competence of a testing laboratory is introduced (no on-site visit required).



Summary of Key Modifications to the 8th CD

- Clarification of the definitions of “issuing authority” and “national responsible body” are made, along with clarification of responsibilities and signatories to a Declaration of Mutual Confidence.
- Composition and roles of an “ad-hoc committee on participation review” are established.



Comment and Vote

- Participating members of OIMLTC 3/SC 5 are requested to review the Committee Drafts on the MAA and Checklists and VOTE by November 15, 2001.
- Observing members are requested to submit comments by the same deadline.



Terminology

- **3.8. Issuing authority** - certifying body or person in an OIML member state that is responsible for type approval and that issues certificates of conformity for specific categories of measuring instruments.
- **3.9. National responsible body** - organization within an OIML member state that does not conduct type evaluation but is responsible for the metrological control of measuring instruments including the approval of specific categories of measuring instruments for national use.



Terminology

- **3.15 Participant** – issuing authority or national responsible body of an OIML member state that accedes to a declaration of mutual confidence.



"Participants" in DoMC

- 4.4. A participant in a declaration of mutual confidence may be:
 - an issuing authority that reviews and transmits test reports prepared by a testing laboratory for which it is responsible and that receives and utilizes test reports from other participants,



"Participants" in DoMC

- an issuing authority that chooses not to review or transmit test reports, but does have a testing laboratory for which it is responsible, and that receives and utilizes test reports from other participants, or
- a national responsible body that does not have a testing laboratory for which it is responsible, and, hence, does not review and transmit test reports, but receives and utilizes test reports from other participants from which an OIML certificate of conformance may also be requested but not required.



Send Comments and Voting Forms to:

- Dr. Charles D. Ehrlich, Chief
National Institute of Standards and
Technology
OSS Technical Standards Activities Program
100 Bureau Drive Stop 2150
Gaithersburg, Maryland 20899-2150

Fax: 301-975-5414 charles.ehrlich@nist.gov