



OIML Member State
Czech Republic

OIML Certificate No.
R49/2024-A-CZ1-26.01

OIML CERTIFICATE ISSUED UNDER SCHEME A

OIML Issuing Authority

Name: Czech Metrology Institute
Address: Okružní 31, 638 00 Brno, Czech Republic

Person responsible: Jan Kalandra

Applicant

Name: Wenling Younio Water Meter Co., Ltd.
Address: No. 1039 Jiulong Street, 317500 Wenling, Zhejiang, CN

Manufacturer

Name: Wenling Younio Water Meter Co., Ltd.
Address: No. 1039 Jiulong Street, 317500 Wenling, Zhejiang, CN

Identification of the certified type *(the detailed characteristics will be defined in the additional pages)*

water meter - single jet, dry dial
LXSG-xxD8/RLN1

Designation of the module *(if applicable)*

-

This OIML Certificate attests the conformity of the above identified type (represented by the sample(s) identified in the OIML type evaluation report) with the requirements of the following Recommendation of the International Organization of Legal Metrology (OIML):

OIML R 49

Edition (year): 2024

For accuracy class (if applicable): 2

This OIML Certificate relates only to metrological and technical characteristics of the type of measuring instrument covered by the relevant OIML Recommendation identified above.

This OIML Certificate does not bestow any form of legal international approval.

The conformity was established by the results of tests and examinations provided in the associated OIML type evaluation report:

No. 0511-ER-V135-25 dated 16 December 2025 that includes 40 pages including annex 1

The technical documentation relating to the identified type is contained in documentation file:

0511-UL-V135-25

OIML Certificate History

Revision No.	Date	Description of the modification
-	9 January 2026	Issuing certificate

The OIML Issuing Authority

RNDr. Pavel Klenovský
Head of Certification Body

Date: 9 January 2026



Important note: Apart from the mention of the Certificate's reference number and the name of the OIML Member State in which the Certificate is issued, partial quotation of the Certificate and of the associated OIML type evaluation report(s) is not permitted, although either may be reproduced in full.

Measuring system description

The water meters type LXSG-xxD8/RLN1, where 'xx' means nominal diameter are designed to measure, memorise and display the volume at metering conditions of water passing through the measurement transducer.

The water meters type LXSG-xxD8/RLN1 are single jet rotary vane wheel water meters with dry mechanical indicating device RLN1.

The water meters types LXSG-xxD8/RLN1 consist of a brass body with connecting screw threads, with a bottom plate and a pivot, an inlet filter, a rotary vane wheel, an O-ring and cover plate, a brass ring closing, two magnetic shields, a mechanical indicating device with pointers and numbered drums, a plastic cover with a plastic lid.

The mechanical indicating devices types RLN1 are formed by numbered rollers with seven drums (5 black and 2 red drums) and two pointers.

The water meters types LXSG-xxD8/RLN1 shall be installed to operate in horizontal position with the indicating device positioned at the top and vertical position.

Marking and inscriptions

The water meter type LXSG-xxD8/RLN1 shall be clearly and indelibly marked with the following information:

- Unit of measurement (m^3)
- Numerical value Q_3 in m^3/h ($Q_3 \times .\times$) and the ratio Q_3 / Q
- OIML certificate number
- Name of trademark of the manufacturer
- Year of manufacture, two last digits of the year of manufacture, or the month and year of manufacture and serial number (as near as possible to the indicating device)
- Direction of flow, by means of an arrow (shown on both sides of the body or on one side only provided the direction of flow arrow is easily visible under all circumstances)
- Maximum admissible pressure (MAP $\times\times$)
- The temperature class (T $\times\times$)
- The pressure loss class ($\Delta p \times\times$)
- The installation sensitivity class (U \times D \times)

These markings shall comply with the requirements of OIML R 49 and shall be visible without dismantling the water meter after the instrument has been placed on the market or put into use.

Characteristics

Basic technical data of water meters types LXSG-xxD8/RLN1:

Manufacturer:	Wenling Younio Water Meter Co., Ltd.	
Model number:	LXSG-xxD8/RLN1	
Nominal diameter:	15	20
Type details:		
Q_1 [m^3/h]:	flowrates are shown in Table <i>Basic metrological data (flowrates)</i>	
Q_2 [m^3/h]:		
Q_3 [m^3/h]:		
Q_4 [m^3/h]:		
Q_3/Q_1 :	$\leq 160^1$ for H position $\leq 50^1$ for V position	
Q_2/Q_1 :	1.6	
Q_4/Q_3 :	1.25	
Measuring principle:	Single jet, dry dial	

Accuracy class:	2	
Temperature class:	T30, T50	
Water pressure class:	MAP16	
Pressure loss class:	ΔP 63	
Maximum admissible temperature [°C]:	50	
Maximum admissible pressure [MPa]:	1.6	
Orientation limitation:	horizontal with the indicating device at the top, vertical	
Indicating range [m ³]:	99 999.99	
Resolution of the indicating device [dm ³]:	0.02/ 0.05	
Resolution of the device for rapid testing [imp/dm ³]:	60.12	37.5756
EUT testing requirements (OIML R 49-2:2013, 8.1.8):		
Category:	Positive displacement meters and turbine meters	
Case:	A	
Installation details:		
Connection type (screw thread):	G ¾ B	G 1 B
Minimum straight length of inlet pipe [mm]:	0	
Minimum straight length of outlet pipe [mm]:	0	
Flow profile sensitivity class:	U0D0	
Flow conditioner (details if required):	No	
Mounting:	in-line	
Orientation:	horizontal with the indicating device at the top, vertical	
Other relevant information:	-	
Length [mm]:	110, 115	130
Reverse flow:	Not designed to measure	
Information specified by the manufacturer (information in the table below are not certified)		
Climatic environments (Directive 2014/32/EU):	5°C to 55°C	

¹ The ratio Q_3 / Q_1 shall be chosen according to paragraph 4.1.4 of OIML R 49-1:2024

Basic metrological data (flowrates)

Manufacturer:	Wenling Younio Water Meter Co., Ltd.						
Model number:	LXSG-15D8/RLN1						
Nominal diameter:	15						
Type details:							
Q ₁ [m ³ /h]:	0.016	0.020	0.025	0.031	0.040	0.050	0.063
Q ₂ [m ³ /h]:	0.025	0.032	0.040	0.050	0.063	0.080	0.100
Q ₃ [m ³ /h]:	2.50	2.50	2.50	2.50	2.50	2.50	2.50
Q ₄ [m ³ /h]:	3.13	3.13	3.13	3.13	3.13	3.13	3.13
Q ₃ /Q ₁ :	160	125	100	80	63	50	40

Manufacturer:	Wenling Younio Water Meter Co., Ltd.						
Model number:	LXSG-20D8/RLN1						
Nominal diameter:	20						
Type details:							
Q_1 [m ³ /h]:	0.025	0.032	0.040	0.050	0.063	0.080	0.100
Q_2 [m ³ /h]:	0.040	0.051	0.064	0.080	0.102	0.128	0.160
Q_3 [m ³ /h]:	4.0	4.0	4.0	4.0	4.0	4.0	4.0
Q_4 [m ³ /h]:	5.0	5.0	5.0	5.0	5.0	5.0	5.0
Q_3/Q_1 :	160	125	100	80	63	50	40

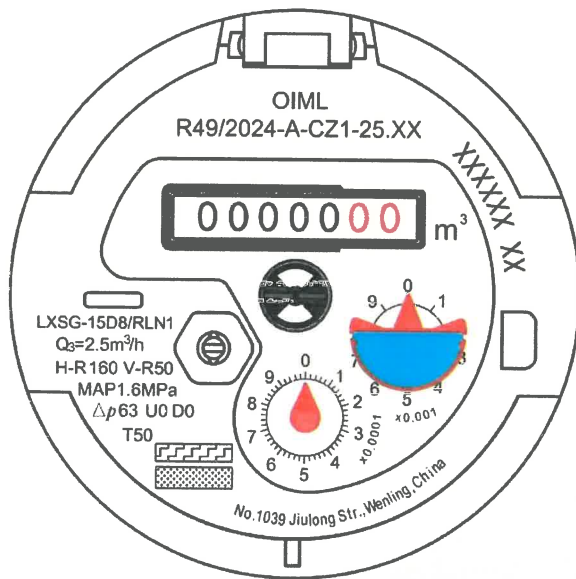
Securing components and verification marks

The types LXSG-xxD8/RLN1 meters have to be sealed by connecting the plastic cover to the body using a wire with a lead (plastic) seal such that the cover and the body cannot be turned without damaging the seal or the sealing wire. The location of seal is described in Figure 1.

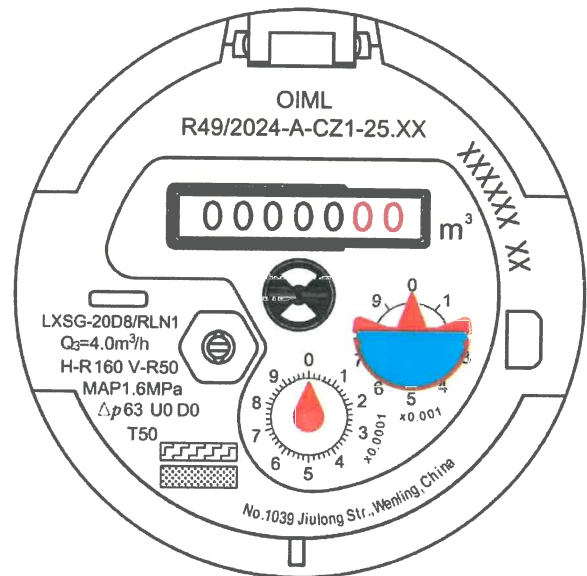
Figure 1: The water meter type LXSG-xxD8/RLN1 – view and sealing, example:



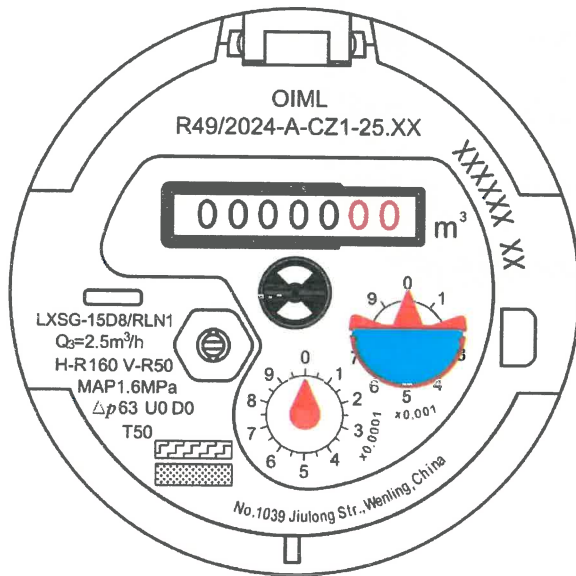
Figure 2: The water meter type LXSG-xxD8/RLN1 – example of registers, variants with customer's logo



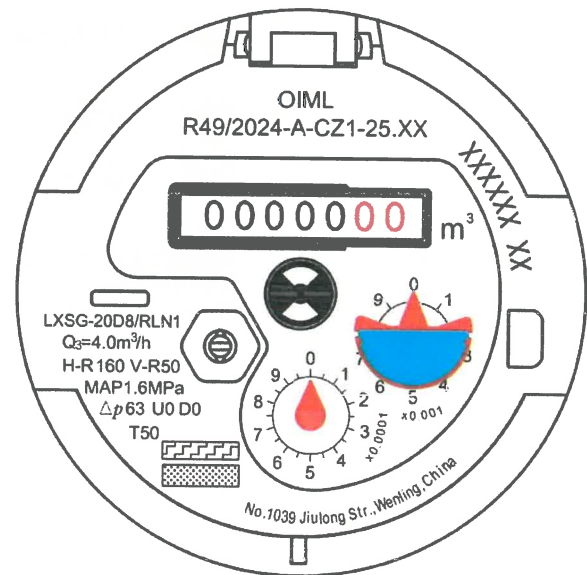
LXSG-15D8/RLN1





LXSG-20D8/RLN1



LXSG-15D8/RLN1



LXSG-20D8/RLN1

 雨岭商标 (manufacturer's logo name)
 客户商标 (customer's logo name)