



OIML Member State

Italy

OIML Certificate No.

R137/2012-A-IT2-25.02

OIML CERTIFICATE ISSUED UNDER SCHEME A

OIML Issuing Authority

Name: Tifernogas S.r.l.
Address: Via R. Morandi 44/d, 06012 Città di Castello (PG), Italy
Person responsible: Paolo Tafani Alunno

Applicant

Name: Pietro Fiorentini S.p.A.
Address: Via E. Fermi 8/10, 36057 Arcugnano (VI), Italy

Manufacturer

Name: Pietro Fiorentini S.p.A.
Address: Via E. Fermi 8/10, 36057 Arcugnano (VI), Italy

Identification of the certified type *(the detailed characteristics will be defined in the additional pages)*

Type: Diaphragm gas meter
RS / 2001 LA G1,6 , G2,5 , G4

Designation of the module *(if applicable)*

Not applicable

This OIML Certificate attests the conformity of the above identified type (represented by the sample(s) identified in the OIML type evaluation report) with the requirements of the following Recommendation of the International Organization of Legal Metrology (OIML):


OIML R 137

Edition (year): 2012, including Amendment 2014

For accuracy class (if applicable): 1,5

<div>OIML Certificate No. R137/2012-A-IT2-25.02</div>																	
<p>This OIML Certificate relates only to metrological and technical characteristics of the type of measuring instrument covered by the relevant OIML Recommendation identified above.</p> <p>This OIML Certificate does not bestow any form of legal international approval.</p>																	
<p>The conformity was established by the results of tests and examinations provided in the associated OIML type evaluation report:</p> <p>No. TER25.02 dated 23 December 2025 that includes 34 pages</p>																	
<p>The technical documentation relating to the identified type is contained in documentation repository:</p> <p>No. QW 2025/000133</p>																	
<div>OIML Certificate History</div> <table><tr><th>Revision No.</th><th>Date</th><th>Description of the modification</th></tr><tr><td>0</td><td>23/12/2025</td><td>Certificate Issuing</td></tr><tr><td></td><td></td><td></td></tr><tr><td></td><td></td><td></td></tr><tr><td></td><td></td><td></td></tr></table>			Revision No.	Date	Description of the modification	0	23/12/2025	Certificate Issuing									
Revision No.	Date	Description of the modification															
0	23/12/2025	Certificate Issuing															
<div><div><div>The OIML Issuing Authority</div><div>Paolo Tafani Alunno</div><div>Head of OIML Issuing Authority</div><div>Date: 23 December 2025</div></div></div>																	
<p><i>Important note:</i> Apart from the mention of the Certificate's reference number and the name of the OIML Member State in which the Certificate is issued, partial quotation of the Certificate and of the associated OIML type evaluation report(s) is not permitted, although either may be reproduced in full.</p> <p>This document is digitally signed. Only digitally signed version of this document can be considered as official.</p>																	

General information of the instrument type

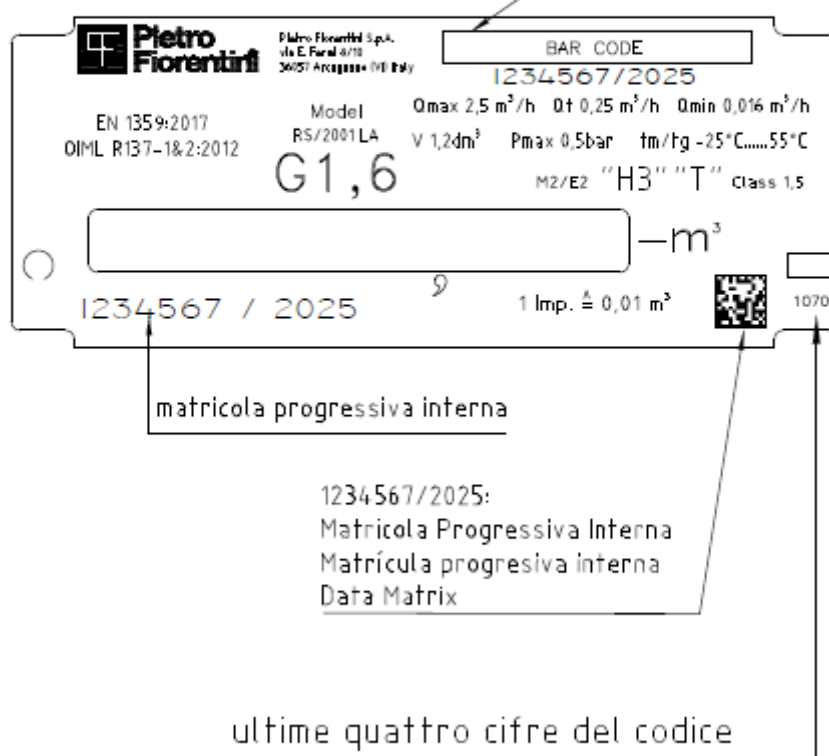
Manufacturer's trade mark	 Pietro Fiorentini
Type designation	RS / 2001 LA G1,6 , G2,5 , G4
Accuracy class	1,5
Connection threads size	G3/4", G7/8", G1", G1¼"
Environmental classes	M2 / E2
Ambient temperature range	-25°C / +55°C
Gas temperature range	-25°C / +55°C
Base pressure	Not applicable
Base temperature	Not applicable
t _{sp}	Not applicable
Orientation	Vertical
Flow direction	Forward flow only (left to right)
Indicating device	Mechanic
Ancillary devices	Reed device (optional)
Electrical power	Not applicable
Software identification	Not applicable

Additional information of the instrument type

Size	Designation	Q _{max} [m³/h]	Q _t [m³/h]	Q _{min} [m³/h]	Cyclic vol. [dm³]	Cases material	P _{max} [bar]	Conn. Dist. [mm]
G1,6	RS / 2001 LA	2,5	0,25	0,016	1,2	Steel	0,5	Up to 160mm
G2,5	RS / 2001 LA	4	0,4	0,025	1,2	Steel	0,5	Up to 160mm
G4	RS / 2001 LA	6	0,6	0,04	1,2	Steel	0,5	Up to 160mm

Labels

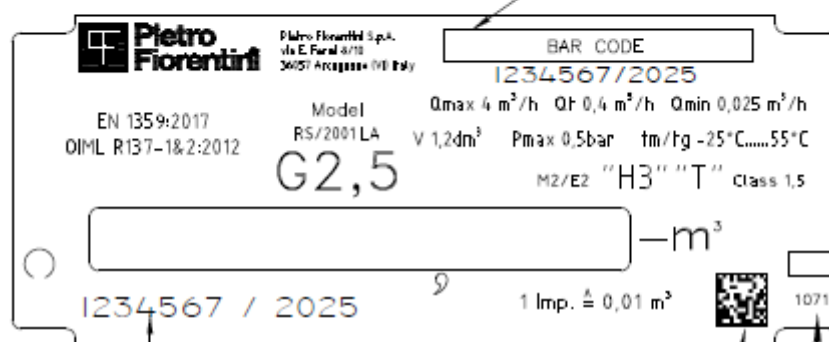
Barcode riportante matricola progressiva interna /anno
XXXXXXX/YYYY (12 cifre)
dove:
XXXXXXX (7 cifre) = matricola progressiva interna
/YYYY (5 cifre) = /anno di produzione
Codice a barre: Tipo 128



INCHIOSTRO: Zebra Premium 5100Resin Ribbon Black

Label of meter type RS / 2001 LA G1,6

Barcode riportante matricola progressiva interna / anno
XXXXXXXX/YYYY (12 cifre)
dove:
XXXXXXXX (7 cifre) = matricola progressiva interna
/YYYY (5 cifre)= /anno di produzione
Codice a barre: Tipo 128



matricola progressiva interna

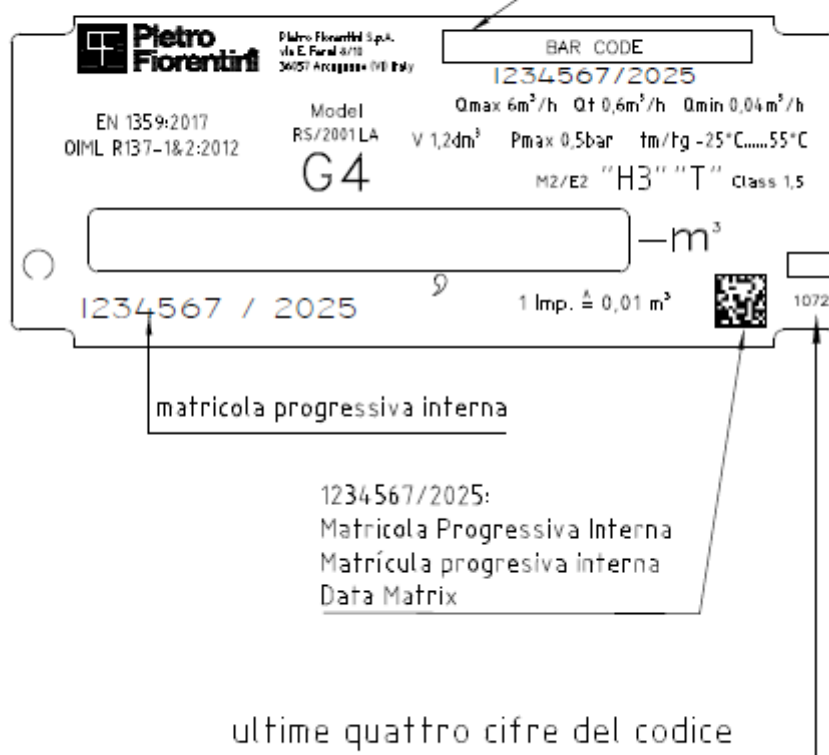
1234567/2025:
Matricola Progressiva Interna
Matrícula progresiva interna
Data Matrix

ultime quattro cifre del codice

INCHIOSTRO: Zebra Premium 5100Resin Ribbon Black

Label of meter type RS / 2001 LA G2,5

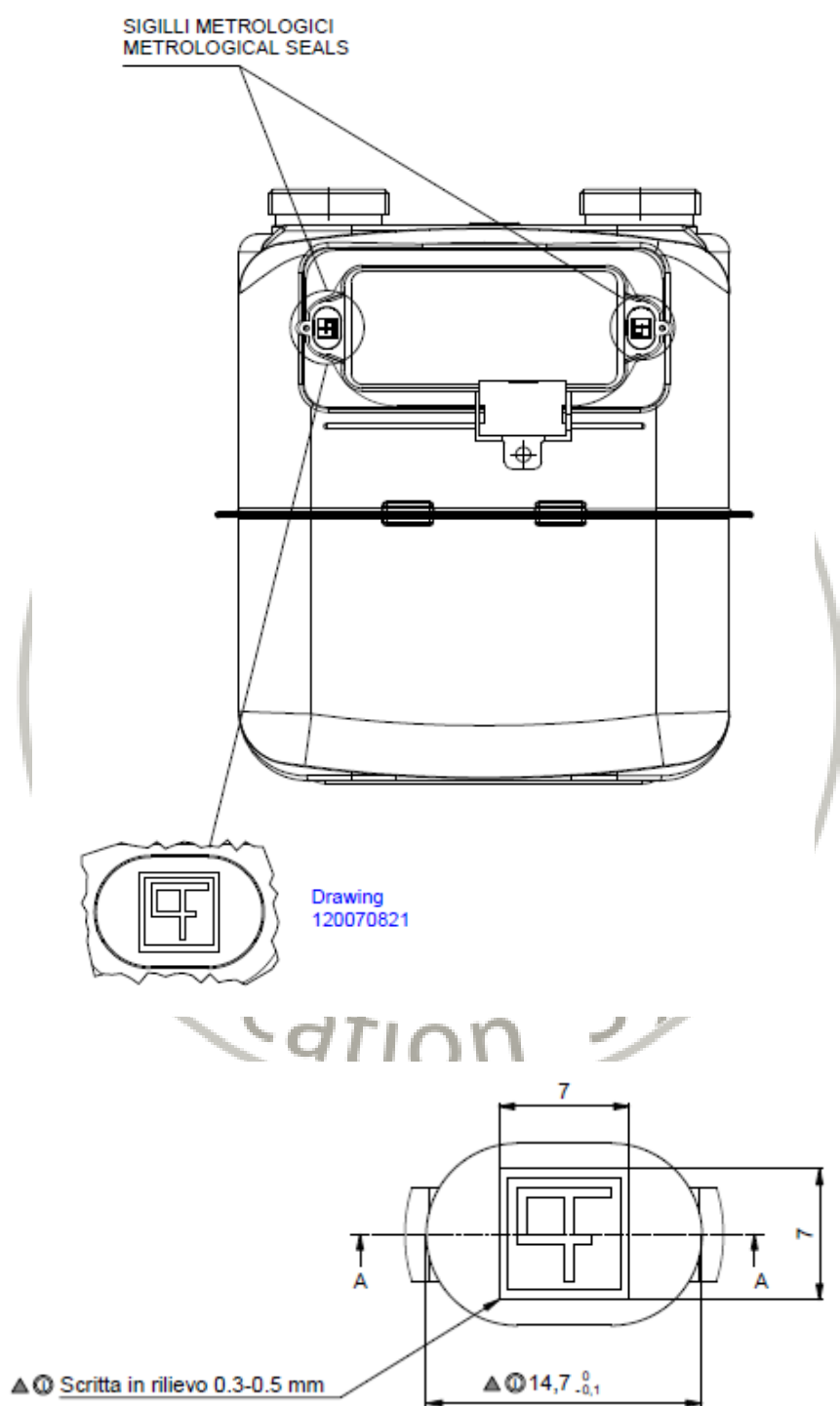
Barcode riportante matricola progressiva interna /anno
XXXXXXX/YYYY (12 cifre)
dove:
XXXXXXX (7 cifre) = matricola progressiva interna
/YYYY (5 cifre) = /anno di produzione
Codice a barre: Tipo 128



INCHIOSTRO: Zebra Premium 5100Resin Ribbon Black

Label of meter type RS / 2001 LA G4

Sealing



Metrological seal Green RAL 6024